

AI in Medicine and Medical Education: Critical Issues and Potential Solutions

William Hersh, MD

Professor

Department of Medical Informatics & Clinical Epidemiology

School of Medicine

Oregon Health & Science University

Portland, OR, USA

<https://www.ohsu.edu/informatics>

Email: hersh@ohsu.edu

Web: <http://www.billhersh.info/>

Blog: <https://informaticsprofessor.blogspot.com/>

Twitter: [@williamhersh](https://twitter.com/williamhersh)

References

- Ali, S.R., Dobbs, T.D., Hutchings, H.A., Whitaker, I.S., 2023. Using ChatGPT to write patient clinic letters. *Lancet Digit Health* 5, e179–e181. [https://doi.org/10.1016/S2589-7500\(23\)00048-1](https://doi.org/10.1016/S2589-7500(23)00048-1)
- AMA: Physicians enthusiastic but cautious about health care AI [WWW Document], 2023. . American Medical Association. URL <https://www.ama-assn.org/press-center/press-releases/ama-physicians-enthusiastic-cautious-about-health-care-ai> (accessed 1.16.24).
- Artificial Intelligence in Health, Health Care, and Biomedical Science: An AI Code of Conduct Principles and Commitments Discussion Draft [WWW Document], 2024. . NAM Perspectives. URL <https://nam.edu/artificial-intelligence-in-health-health-care-and-biomedical-science-an-ai-code-of-conduct-principles-and-commitments-discussion-draft/> (accessed 4.9.24).
- Attia, Z.I., Friedman, P.A., Noseworthy, P.A., Lopez-Jimenez, F., Ladewig, D.J., Satam, G., Pellikka, P.A., Munger, T.M., Asirvatham, S.J., Scott, C.G., Carter, R.E., Kapa, S., 2019. Age and Sex Estimation Using Artificial Intelligence From Standard 12-Lead ECGs. *Circ Arrhythm Electrophysiol* 12, e007284. <https://doi.org/10.1161/CIRCEP.119.007284>
- Ayers, J.W., Poliak, A., Dredze, M., Leas, E.C., Zhu, Z., Kelley, J.B., Faix, D.J., Goodman, A.M., Longhurst, C.A., Hogarth, M., Smith, D.M., 2023a. Comparing Physician and Artificial Intelligence Chatbot Responses to Patient Questions Posted to a Public Social Media Forum. *JAMA Intern Med* 183, 589–596. <https://doi.org/10.1001/jamainternmed.2023.1838>
- Ayers, J.W., Zhu, Z., Poliak, A., Leas, E.C., Dredze, M., Hogarth, M., Smith, D.M., 2023b. Evaluating Artificial Intelligence Responses to Public Health Questions. *JAMA Netw Open* 6, e2317517. <https://doi.org/10.1001/jamanetworkopen.2023.17517>
- Ball, P., 2023. Is AI leading to a reproducibility crisis in science? *Nature* 624, 22–25. <https://doi.org/10.1038/d41586-023-03817-6>
- Benoit, J.R.A., 2023. ChatGPT for Clinical Vignette Generation, Revision, and Evaluation. <https://doi.org/10.1101/2023.02.04.23285478>

- Bensoussan, Y., Elemento, O., Rameau, A., 2024. Voice as an AI Biomarker of Health-Introducing Audiomics. *JAMA Otolaryngol Head Neck Surg* 150, 283–284. <https://doi.org/10.1001/jamaoto.2023.4807>
- Cabral, S., Restrepo, D., Kanjee, Z., Wilson, P., Crowe, B., Abdalnour, R.-E., Rodman, A., 2024. Clinical Reasoning of a Generative Artificial Intelligence Model Compared With Physicians. *JAMA Intern Med*. <https://doi.org/10.1001/jamainternmed.2024.0295>
- Chen, A., Chen, D.O., Tian, L., 2023. Benchmarking the symptom-checking capabilities of ChatGPT for a broad range of diseases. *J Am Med Inform Assoc* ocad245. <https://doi.org/10.1093/jamia/ocad245>
- Chin, M.H., Afsar-Manesh, N., Bierman, A.S., Chang, C., Colón-Rodríguez, C.J., Dullabh, P., Duran, D.G., Fair, M., Hernandez-Boussard, T., Hightower, M., Jain, A., Jordan, W.B., Konya, S., Moore, R.H., Moore, T.T., Rodriguez, R., Shaheen, G., Snyder, L.P., Srinivasan, M., Umscheid, C.A., Ohno-Machado, L., 2023. Guiding Principles to Address the Impact of Algorithm Bias on Racial and Ethnic Disparities in Health and Health Care. *JAMA Netw Open* 6, e2345050. <https://doi.org/10.1001/jamanetworkopen.2023.45050>
- Choi, J.H., Monahan, A., Schwarcz, D., 2023. Lawyering in the Age of Artificial Intelligence. <https://doi.org/10.2139/ssrn.4626276>
- Cooper, A., Rodman, A., 2023. AI and Medical Education — A 21st-Century Pandora’s Box. *New England Journal of Medicine*. <https://doi.org/10.1056/NEJMp2304993>
- Coyner, A.S., Singh, P., Brown, J.M., Ostmo, S., Chan, R.V.P., Chiang, M.F., Kalpathy-Cramer, J., Campbell, J.P., Imaging and Informatics in Retinopathy of Prematurity Consortium, 2023. Association of Biomarker-Based Artificial Intelligence With Risk of Racial Bias in Retinal Images. *JAMA Ophthalmol* 141, 543–552. <https://doi.org/10.1001/jamaophthalmol.2023.1310>
- Decker, H., Trang, K., Ramirez, J., Colley, A., Pierce, L., Coleman, M., Bongiovanni, T., Melton, G.B., Wick, E., 2023. Large Language Model-Based Chatbot vs Surgeon-Generated Informed Consent Documentation for Common Procedures. *JAMA Netw Open* 6, e2336997. <https://doi.org/10.1001/jamanetworkopen.2023.36997>
- Dell’Acqua, F., McFowland, E., Mollick, E.R., Lifshitz-Assaf, H., Kellogg, K., Rajendran, S., Krayer, L., Candelon, F., Lakhani, K.R., 2023. Navigating the Jagged Technological Frontier: Field Experimental Evidence of the Effects of AI on Knowledge Worker Productivity and Quality. <https://doi.org/10.2139/ssrn.4573321>
- Denny, P., Prather, J., Becker, B.A., Finnie-Ansley, J., Hellas, A., Leinonen, J., Luxton-Reilly, A., Reeves, B.N., Santos, E.A., Sarsa, S., 2024. Computing Education in the Era of Generative AI. *Commun. ACM* 67, 56–67. <https://doi.org/10.1145/3624720>
- Desaire, H., Chua, A.E., Isom, M., Jarosova, R., Hua, D., 2023. Distinguishing academic science writing from humans or ChatGPT with over 99% accuracy using off-the-shelf machine learning tools. *Cell Rep Phys Sci* 4, 101426. <https://doi.org/10.1016/j.xcrp.2023.101426>
- Donzé, J., John, G., Genné, D., Mancinetti, M., Gouveia, A., Méan, M., Bütikofer, L., Aujesky, D., Schnipper, J., 2023. Effects of a Multimodal Transitional Care Intervention in Patients at High Risk of Readmission: The TARGET-READ Randomized Clinical Trial. *JAMA Intern Med* 183, 658–668. <https://doi.org/10.1001/jamainternmed.2023.0791>
- Dorr, D.A., Adams, L., Embí, P., 2023. Harnessing the Promise of Artificial Intelligence Responsibly. *JAMA* 329, 1347–1348. <https://doi.org/10.1001/jama.2023.2771>
- Dratsch, T., Chen, X., Rezazade Mehrizi, M., Kloeckner, R., Mähringer-Kunz, A., Püsken, M., Baessler, B., Sauer, S., Maintz, D., Pinto Dos Santos, D., 2023. Automation Bias in

- Mammography: The Impact of Artificial Intelligence BI-RADS Suggestions on Reader Performance. *Radiology* 307, e222176. <https://doi.org/10.1148/radiol.222176>
- Edwards, C., 2024. Teaching Transformed. *Commun. ACM* 67, 12–13. <https://doi.org/10.1145/3637208>
- Embi, P.J., 2021. Algorithmovigilance-Advancing Methods to Analyze and Monitor Artificial Intelligence-Driven Health Care for Effectiveness and Equity. *JAMA Netw Open* 4, e214622. <https://doi.org/10.1001/jamanetworkopen.2021.4622>
- Finlayson, S.G., Subbaswamy, A., Singh, K., Bowers, J., Kupke, A., Zittrain, J., Kohane, I.S., Saria, S., 2021. The Clinician and Dataset Shift in Artificial Intelligence. *N Engl J Med* 385, 283–286. <https://doi.org/10.1056/NEJMc2104626>
- Gichoya, J.W., Banerjee, I., Bhimireddy, A.R., Burns, J.L., Celi, L.A., Chen, L.-C., Correa, R., Dullerud, N., Ghassemi, M., Huang, S.-C., Kuo, P.-C., Lungren, M.P., Palmer, L.J., Price, B.J., Purkayastha, S., Pyrros, A.T., Oakden-Rayner, L., Okechukwu, C., Seyyed-Kalantari, L., Trivedi, H., Wang, R., Zaiman, Z., Zhang, H., 2022. AI recognition of patient race in medical imaging: a modelling study. *Lancet Digit Health* 4, e406–e414. [https://doi.org/10.1016/S2589-7500\(22\)00063-2](https://doi.org/10.1016/S2589-7500(22)00063-2)
- Gray, A., 2024. ChatGPT “contamination”: estimating the prevalence of LLMs in the scholarly literature. <https://doi.org/10.48550/arXiv.2403.16887>
- Greenhalgh, T., Fisman, D., Cane, D.J., Oliver, M., Macintyre, C.R., 2022. Adapt or die: how the pandemic made the shift from EBM to EBM+ more urgent. *BMJ Evid Based Med* 27, 253–260. <https://doi.org/10.1136/bmjebm-2022-111952>
- Han, C., Kim, D.W., Kim, S., You, S.C., Park, J.Y., Bae, S., Yoon, D., 2023. Evaluation Of GPT-4 for 10-Year Cardiovascular Risk Prediction: Insights from the UK Biobank and KoGES Data. <https://doi.org/10.2139/ssrn.4583995>
- Han, R., Acosta, J.N., Shakeri, Z., Ioannidis, J., Topol, E., Rajpurkar, P., 2023. Randomized Controlled Trials Evaluating AI in Clinical Practice: A Scoping Evaluation. <https://doi.org/10.1101/2023.09.12.23295381>
- Hassan, C., Spadaccini, M., Mori, Y., Foroutan, F., Facciorusso, A., Gkolfakis, P., Tziatzios, G., Triantafyllou, K., Antonelli, G., Khalaf, K., Rizkala, T., Vandvik, P.O., Fugazza, A., Rondonotti, E., Glissen-Brown, J.R., Kamba, S., Maida, M., Correale, L., Bhandari, P., Jover, R., Sharma, P., Rex, D.K., Repici, A., 2023. Real-Time Computer-Aided Detection of Colorectal Neoplasia During Colonoscopy : A Systematic Review and Meta-analysis. *Ann Intern Med*. <https://doi.org/10.7326/M22-3678>
- Heneghan, J.A., Walker, S.B., Fawcett, A., Bennett, T.D., Dziorny, A.C., Sanchez-Pinto, L.N., Farris, R.W.D., Winter, M.C., Badke, C., Martin, B., Brown, S.R., McCrory, M.C., Ness-Cochinwala, M., Rogerson, C., Baloglu, O., Harwayne-Gidansky, I., Hudkins, M.R., Kamaleswaran, R., Gangadharan, S., Tripathi, S., Mendonca, E.A., Markovitz, B.P., Mayampurath, A., Spaeder, M.C., Pediatric Data Science and Analytics (PEDAL) subgroup of the Pediatric Acute Lung Injury and Sepsis Investigators (PALISI) Network, 2023. The Pediatric Data Science and Analytics Subgroup of the Pediatric Acute Lung Injury and Sepsis Investigators Network: Use of Supervised Machine Learning Applications in Pediatric Critical Care Medicine Research. *Pediatr Crit Care Med*. <https://doi.org/10.1097/PCC.0000000000003425>
- Hersh, W., 2024a. Search still matters: information retrieval in the era of generative AI. *J Am Med Inform Assoc* ocae014. <https://doi.org/10.1093/jamia/ocae014>

- Hersh, W., 2024b. Translational AI: A Necessity and Opportunity for Biomedical Informatics and Data Science. NLM Musings from the Mezzanine. URL <https://nlmdirector.nlm.nih.gov/2024/02/07/translational-ai-a-necessity-and-opportunity-for-biomedical-informatics-and-data-science/> (accessed 2.10.24).
- Hersh, W., 2023. Physician and Medical Student Competence in AI Must Include Broader Competence in Clinical Informatics. Informatics Professor. URL <https://informaticsprofessor.blogspot.com/2023/09/physician-and-medical-student.html> (accessed 9.15.23).
- Hersh, W., Ehrenfeld, J., 2020. Clinical Informatics, in: Health Systems Science, 2nd Edition. pp. 156–170.
- Hersh, W.R., Gorman, P.N., Biagioli, F.E., Mohan, V., Gold, J.A., Mejicano, G.C., 2014. Beyond information retrieval and electronic health record use: competencies in clinical informatics for medical education. *Adv Med Educ Pract* 5, 205–212. <https://doi.org/10.2147/AMEP.S63903>
- Hinton, G.E., Osindero, S., Teh, Y.-W., 2006. A fast learning algorithm for deep belief nets. *Neural Comput* 18, 1527–1554. <https://doi.org/10.1162/neco.2006.18.7.1527>
- Holmstrom, L., Christensen, M., Yuan, N., Weston Hughes, J., Theurer, J., Jujjavarapu, M., Fatehi, P., Kwan, A., Sandhu, R.K., Ebinger, J., Cheng, S., Zou, J., Chugh, S.S., Ouyang, D., 2023. Deep learning-based electrocardiographic screening for chronic kidney disease. *Commun Med (Lond)* 3, 73. <https://doi.org/10.1038/s43856-023-00278-w>
- Hong, S., Lin, Y., Liu, Bang, Liu, Bangbang, Wu, B., Li, D., Chen, J., Zhang, J., Wang, J., Zhang, Li, Zhang, Lingyao, Yang, M., Zhuge, M., Guo, T., Zhou, T., Tao, W., Wang, W., Tang, X., Lu, X., Zheng, X., Liang, X., Fei, Y., Cheng, Y., Xu, Z., Wu, C., 2024. Data Interpreter: An LLM Agent For Data Science. <https://doi.org/10.48550/arXiv.2402.18679>
- Huang, J., Neill, L., Wittbrodt, M., Melnick, D., Klug, M., Thompson, M., Bailitz, J., Loftus, T., Malik, S., Phull, A., Weston, V., Heller, J.A., Etemadi, M., 2023. Generative Artificial Intelligence for Chest Radiograph Interpretation in the Emergency Department. *JAMA Netw Open* 6, e2336100. <https://doi.org/10.1001/jamanetworkopen.2023.36100>
- Idrisoglu, A., Dallora, A.L., Anderberg, P., Berglund, J.S., 2023. Applied Machine Learning Techniques to Diagnose Voice-Affecting Conditions and Disorders: Systematic Literature Review. *J Med Internet Res* 25, e46105. <https://doi.org/10.2196/46105>
- James, C.A., Wachter, R.M., Woolliscroft, J.O., 2022. Preparing Clinicians for a Clinical World Influenced by Artificial Intelligence. *JAMA* 327, 1333–1334. <https://doi.org/10.1001/jama.2022.3580>
- Jumper, J., Evans, R., Pritzel, A., Green, T., Figurnov, M., Ronneberger, O., Tunyasuvunakool, K., Bates, R., Židek, A., Potapenko, A., Bridgland, A., Meyer, C., Kohl, S.A.A., Ballard, A.J., Cowie, A., Romera-Paredes, B., Nikolov, S., Jain, R., Adler, J., Back, T., Petersen, S., Reiman, D., Clancy, E., Zielinski, M., Steinegger, M., Pacholska, M., Berghammer, T., Bodenstein, S., Silver, D., Vinyals, O., Senior, A.W., Kavukcuoglu, K., Kohli, P., Hassabis, D., 2021. Highly accurate protein structure prediction with AlphaFold. *Nature* 596, 583–589. <https://doi.org/10.1038/s41586-021-03819-2>
- Kanjee, Z., Crowe, B., Rodman, A., 2023. Accuracy of a Generative Artificial Intelligence Model in a Complex Diagnostic Challenge. *JAMA* 330, 78–80. <https://doi.org/10.1001/jama.2023.8288>
- Kapoor, S., Narayanan, A., 2023. Leakage and the reproducibility crisis in machine-learning-based science. *Patterns (N Y)* 4, 100804. <https://doi.org/10.1016/j.patter.2023.100804>

- Katz, U., Cohen, E., Shachar, E., Somer, J., Fink, A., Morse, E., Shreiber, B., Wolf, I., 2024. GPT versus Resident Physicians — A Benchmark Based on Official Board Scores. *NEJM AI* 0, AIdbp2300192. <https://doi.org/10.1056/AIdbp2300192>
- Khare, Y., 2023. Generative AI vs Predictive AI: What is the Difference? *Analytics Vidhya*. URL <https://www.analyticsvidhya.com/blog/2023/09/generative-ai-vs-predictive-ai/> (accessed 12.12.23).
- King, M., 2023. How Search Generative Experience works and why retrieval-augmented generation is our future [WWW Document]. *Search Engine Land*. URL <https://searchengineland.com/how-search-generative-experience-works-and-why-retrieval-augmented-generation-is-our-future-433393> (accessed 12.10.23).
- Kung, T.H., Cheatham, M., Medenilla, A., Sillos, C., De Leon, L., Elepaño, C., Madriaga, M., Aggabao, R., Diaz-Candido, G., Maningo, J., Tseng, V., 2023. Performance of ChatGPT on USMLE: Potential for AI-assisted medical education using large language models. *PLOS Digit Health* 2, e0000198. <https://doi.org/10.1371/journal.pdig.0000198>
- Lancaster, F.W., 1979. *Information retrieval systems: Characteristics, testing, and evaluation*, 2nd ed edition. ed. John Wiley & Sons, New York.
- Langlotz, C.P., 2019. Will Artificial Intelligence Replace Radiologists? *Radiol Artif Intell* 1, e190058. <https://doi.org/10.1148/ryai.2019190058>
- Lee, B.K., Mayhew, E.J., Sanchez-Lengeling, B., Wei, J.N., Qian, W.W., Little, K.A., Andres, M., Nguyen, B.B., Moloy, T., Yasonik, J., Parker, J.K., Gerkin, R.C., Mainland, J.D., Wiltschko, A.B., 2023. A principal odor map unifies diverse tasks in olfactory perception. *Science* 381, 999–1006. <https://doi.org/10.1126/science.ade4401>
- Levine, D.M., Tuwani, R., Kompa, B., Varma, A., Finlayson, S.G., Mehrotra, A., Beam, A., 2023. The Diagnostic and Triage Accuracy of the GPT-3 Artificial Intelligence Model. <https://doi.org/10.1101/2023.01.30.23285067>
- Levkovich, I., Elyoseph, Z., 2023. Identifying depression and its determinants upon initiating treatment: ChatGPT versus primary care physicians. *Fam Med Community Health* 11, e002391. <https://doi.org/10.1136/fmch-2023-002391>
- Lewis, A.E., Weiskopf, N., Abrams, Z.B., Foraker, R., Lai, A.M., Payne, P.R.O., Gupta, A., 2023. Electronic health record data quality assessment and tools: a systematic review. *J Am Med Inform Assoc* ocad120. <https://doi.org/10.1093/jamia/ocad120>
- Li, D., Gupta, K., Bhaduri, M., Sathiadoss, P., Bhatnagar, S., Chong, J., 2024. Comparing GPT-3.5 and GPT-4 Accuracy and Drift in Radiology Diagnosis Please Cases. *Radiology* 310, e232411. <https://doi.org/10.1148/radiol.232411>
- Liang, W., Izzo, Z., Zhang, Y., Lepp, H., Cao, H., Zhao, X., Chen, L., Ye, H., Liu, S., Huang, Z., McFarland, D.A., Zou, J.Y., 2024a. Monitoring AI-Modified Content at Scale: A Case Study on the Impact of ChatGPT on AI Conference Peer Reviews. <https://doi.org/10.48550/arXiv.2403.07183>
- Liang, W., Yuksekgonul, M., Mao, Y., Wu, E., Zou, J., 2023. GPT detectors are biased against non-native English writers. *Patterns (N Y)* 4, 100779. <https://doi.org/10.1016/j.patter.2023.100779>
- Liang, W., Zhang, Y., Wu, Z., Lepp, H., Ji, W., Zhao, X., Cao, H., Liu, S., He, S., Huang, Z., Yang, D., Potts, C., Manning, C.D., Zou, J.Y., 2024b. Mapping the Increasing Use of LLMs in Scientific Papers. <https://doi.org/10.48550/arXiv.2404.01268>
- Liu, X., Rivera, S.C., Moher, D., Calvert, M.J., Denniston, A.K., SPIRIT-AI and CONSORT-AI Working Group, 2020. Reporting guidelines for clinical trial reports for interventions

- involving artificial intelligence: the CONSORT-AI Extension. *BMJ* 370, m3164.
<https://doi.org/10.1136/bmj.m3164>
- Mangas-Sanjuan, C., de-Castro, L., Cubiella, J., Díez-Redondo, P., Suárez, A., Pellisé, M., Fernández, N., Zarraguiños, S., Núñez-Rodríguez, H., Álvarez-García, V., Ortiz, O., Sala-Miquel, N., Zapater, P., Jover, R., CADILLAC study investigators*, 2023. Role of Artificial Intelligence in Colonoscopy Detection of Advanced Neoplasias : A Randomized Trial. *Ann Intern Med.* <https://doi.org/10.7326/M22-2619>
- McCarthy, J., Feigenbaum, E.A., 1990. In Memoriam: Arthur Samuel: Pioneer in Machine Learning. *AIMag* 11, 10–10. <https://doi.org/10.1609/aimag.v11i3.840>
- Medical groups taking their time to adopt the right set of AI tools [WWW Document], 2023. . Medical Group Management Association. URL <https://www.mgma.com/mgma-stat/medical-groups-taking-their-time-to-adopt-the-right-set-of-ai-tools> (accessed 11.22.23).
- Meyer, A., Benn, R., 2023. Hype Cycle for Healthcare Providers, 2023 [WWW Document]. Gartner. URL <https://www.gartner.com/en/documents/4534899> (accessed 1.6.23).
- Mitsuyama, Y., Matsumoto, T., Tatekawa, H., Walston, S.L., Kimura, T., Yamamoto, A., Watanabe, T., Miki, Y., Ueda, D., 2023. Chest radiography as a biomarker of ageing: artificial intelligence-based, multi-institutional model development and validation in Japan. *The Lancet Healthy Longevity* 0. [https://doi.org/10.1016/S2666-7568\(23\)00133-2](https://doi.org/10.1016/S2666-7568(23)00133-2)
- Mollick, E., 2024. Co-Intelligence: Living and Working with AI. Portfolio.
- Mollick, E., 2023. The Homework Apocalypse [WWW Document]. One Useful Thing. URL <https://www.oneusefulthing.org/p/the-homework-apocalypse> (accessed 3.20.24).
- Mollick, E.R., Mollick, L., 2023a. Using AI to Implement Effective Teaching Strategies in Classrooms: Five Strategies, Including Prompts. <https://doi.org/10.2139/ssrn.4391243>
- Mollick, E.R., Mollick, L., 2023b. Assigning AI: Seven Approaches for Students, with Prompts. <https://doi.org/10.2139/ssrn.4475995>
- Mukherjee, P., Humbert-Droz, M., Chen, J.H., Gevaert, O., 2023. SCOPE: predicting future diagnoses in office visits using electronic health records. *Sci Rep* 13, 11005. <https://doi.org/10.1038/s41598-023-38257-9>
- Nam, J., 2023. 56% of College Students Have Used AI on Assignments or Exams | BestColleges [WWW Document]. BestColleges.com. URL <https://www.bestcolleges.com/research/most-college-students-have-used-ai-survey/> (accessed 12.13.23).
- Nori, H., Lee, Y.T., Zhang, S., Carignan, D., Edgar, R., Fusi, N., King, N., Larson, J., Li, Y., Liu, W., Luo, R., McKinney, S.M., Ness, R.O., Poon, H., Qin, T., Usuyama, N., White, C., Horvitz, E., 2023. Can Generalist Foundation Models Outcompete Special-Purpose Tuning? Case Study in Medicine. <https://doi.org/10.48550/arXiv.2311.16452>
- Odri, G.-A., Yun Yoon, D.J., 2023. Detecting generative artificial intelligence in scientific articles: evasion techniques and implications for scientific integrity. *Orthop Traumatol Surg Res* 103706. <https://doi.org/10.1016/j.otsr.2023.103706>
- Omiye, J.A., Lester, J.C., Spichak, S., Rotemberg, V., Daneshjou, R., 2023. Large language models propagate race-based medicine. *npj Digit. Med.* 6, 1–4. <https://doi.org/10.1038/s41746-023-00939-z>
- Palmer, K., 2023. The 'model-eat-model world' of clinical AI: How predictive power becomes a pitfall. *STAT.* URL <https://www.statnews.com/2023/10/10/the-model-eat-model-world-of-clinical-ai-how-predictive-power-becomes-a-pitfall/> (accessed 11.28.23).

- Plana, D., Shung, D.L., Grimshaw, A.A., Saraf, A., Sung, J.J.Y., Kann, B.H., 2022. Randomized Clinical Trials of Machine Learning Interventions in Health Care: A Systematic Review. *JAMA Netw Open* 5, e2233946. <https://doi.org/10.1001/jamanetworkopen.2022.33946>
- Poldrack, R.A., Lu, T., Beguš, G., 2023. AI-assisted coding: Experiments with GPT-4. <https://doi.org/10.48550/arXiv.2304.13187>
- Poplin, R., Varadarajan, A.V., Blumer, K., Liu, Y., McConnell, M.V., Corrado, G.S., Peng, L., Webster, D.R., 2018. Prediction of cardiovascular risk factors from retinal fundus photographs via deep learning. *Nat Biomed Eng* 2, 158–164. <https://doi.org/10.1038/s41551-018-0195-0>
- Pyrros, A., Borstelmann, S.M., Mantravadi, R., Zaiman, Z., Thomas, K., Price, B., Greenstein, E., Siddiqui, N., Willis, M., Shulhan, I., Hines-Shah, J., Horowitz, J.M., Nikolaidis, P., Lungren, M.P., Rodríguez-Fernández, J.M., Gichoya, J.W., Koyejo, S., Flanders, A.E., Khandwala, N., Gupta, A., Garrett, J.W., Cohen, J.P., Layden, B.T., Pickhardt, P.J., Galanter, W., 2023. Opportunistic detection of type 2 diabetes using deep learning from frontal chest radiographs. *Nat Commun* 14, 4039. <https://doi.org/10.1038/s41467-023-39631-x>
- Rajkumar, A., Oren, E., Chen, K., Dai, A.M., Hajaj, N., Hardt, M., Liu, P.J., Liu, X., Marcus, J., Sun, M., Sundberg, P., Yee, H., Zhang, K., Zhang, Y., Flores, G., Duggan, G.E., Irvine, J., Le, Q., Litsch, K., Mossin, A., Tansuwan, J., Wang, D., Wexler, J., Wilson, J., Ludwig, D., Volchenboun, S.L., Chou, K., Pearson, M., Madabushi, S., Shah, N.H., Butte, A.J., Howell, M.D., Cui, C., Corrado, G.S., Dean, J., 2018. Scalable and accurate deep learning with electronic health records. *npj Digital Medicine* 1, 1–10. <https://doi.org/10.1038/s41746-018-0029-1>
- Rajpurkar, P., Chen, E., Banerjee, O., Topol, E.J., 2022. AI in health and medicine. *Nat Med* 1–8. <https://doi.org/10.1038/s41591-021-01614-0>
- Rajpurkar, P., Lungren, M.P., 2023. The Current and Future State of AI Interpretation of Medical Images. *N Engl J Med* 388, 1981–1990. <https://doi.org/10.1056/NEJMra2301725>
- Rao, A., Pang, M., Kim, J., Kamineni, M., Lie, W., Prasad, A.K., Landman, A., Dreyer, K., Succi, M.D., 2023. Assessing the Utility of ChatGPT Throughout the Entire Clinical Workflow: Development and Usability Study. *J Med Internet Res* 25, e48659. <https://doi.org/10.2196/48659>
- Russell, R.G., Lovett Novak, L., Patel, M., Garvey, K.V., Craig, K.J.T., Jackson, G.P., Moore, D., Miller, B.M., 2023. Competencies for the Use of Artificial Intelligence-Based Tools by Health Care Professionals. *Acad Med* 98, 348–356. <https://doi.org/10.1097/ACM.0000000000004963>
- Sadasivan, V.S., Kumar, A., Balasubramanian, S., Wang, W., Feizi, S., 2023. Can AI-Generated Text be Reliably Detected? <https://doi.org/10.48550/arXiv.2303.11156>
- Sarraju, A., Bruemmer, D., Van Iterson, E., Cho, L., Rodriguez, F., Laffin, L., 2023. Appropriateness of Cardiovascular Disease Prevention Recommendations Obtained From a Popular Online Chat-Based Artificial Intelligence Model. *JAMA*. <https://doi.org/10.1001/jama.2023.1044>
- Shah, C., 2023. AI information retrieval: A search engine researcher explains the promise and peril of letting ChatGPT and its cousins search the web for you [WWW Document]. The Conversation. URL <http://theconversation.com/ai-information-retrieval-a-search-engine-researcher-explains-the-promise-and-peril-of-letting-chatgpt-and-its-cousins-search-the-web-for-you-200875> (accessed 8.22.23).

- Shah, C., 2022. *A Hands-On Introduction to Machine Learning*. Cambridge University Press.
- Spitale, G., Biller-Andorno, N., Germani, F., 2023. AI model GPT-3 (dis)informs us better than humans. *Sci Adv* 9, eadh1850. <https://doi.org/10.1126/sciadv.adh1850>
- Swanson, K., Liu, G., Catacutan, D.B., Arnold, A., Zou, J., Stokes, J.M., 2024. Generative AI for designing and validating easily synthesizable and structurally novel antibiotics. *Nat Mach Intell* 6, 338–353. <https://doi.org/10.1038/s42256-024-00809-7>
- Tang, A.S., Rankin, K.P., Ceroni, G., Miramontes, S., Mills, H., Roger, J., Zeng, B., Nelson, C., Soman, K., Woldemariam, S., Li, Y., Lee, A., Bove, R., Glymour, M., Aghaeepour, N., Oskotsky, T.T., Miller, Z., Allen, I.E., Sanders, S.J., Baranzini, S., Sirota, M., 2024. Leveraging electronic health records and knowledge networks for Alzheimer’s disease prediction and sex-specific biological insights. *Nat Aging* 4, 379–395. <https://doi.org/10.1038/s43587-024-00573-8>
- Tang, J., LeBel, A., Jain, S., Huth, A.G., 2023. Semantic reconstruction of continuous language from non-invasive brain recordings. *Nat Neurosci* 26, 858–866. <https://doi.org/10.1038/s41593-023-01304-9>
- Tang, R., Chuang, Y.-N., Hu, X., 2024. The Science of Detecting LLM-Generated Text. *Commun. ACM* 67, 50–59. <https://doi.org/10.1145/3624725>
- Topol, E., 2022. The amazing power of “machine eyes.” Ground Truths. URL <https://erictopol.substack.com/p/the-amazing-power-of-machine-eyes> (accessed 10.14.22).
- Topol, E., 2019. *Deep Medicine: How Artificial Intelligence Can Make Healthcare Human Again*, Illustrated Edition. ed. Basic Books, New York.
- Tu, T., Palepu, A., Schaekermann, M., Saab, K., Freyberg, J., Tanno, R., Wang, A., Li, B., Amin, M., Tomasev, N., Azizi, S., Singhal, K., Cheng, Y., Hou, L., Webson, A., Kulkarni, K., Mahdavi, S.S., Semturs, C., Gottweis, J., Barral, J., Chou, K., Corrado, G.S., Matias, Y., Karthikesalingam, A., Natarajan, V., 2024. Towards Conversational Diagnostic AI. <https://doi.org/10.48550/arXiv.2401.05654>
- Tu, X., Zou, J., Su, W., Zhang, L., 2024. What Should Data Science Education Do With Large Language Models? *Harvard Data Science Review* 6. <https://doi.org/10.1162/99608f92.bff007ab>
- Ueda, D., Matsumoto, T., Ehara, S., Yamamoto, A., Walston, S.L., Ito, A., Shimono, T., Shiba, M., Takeshita, T., Fukuda, D., Miki, Y., 2023. Artificial intelligence-based model to classify cardiac functions from chest radiographs: a multi-institutional, retrospective model development and validation study. *Lancet Digit Health* S2589-7500(23)00107–3. [https://doi.org/10.1016/S2589-7500\(23\)00107-3](https://doi.org/10.1016/S2589-7500(23)00107-3)
- Vaid, A., Sawant, A., Suarez-Farinas, M., Lee, J., Kaul, S., Kovatch, P., Freeman, R., Jiang, J., Jayaraman, P., Fayad, Z., Argulian, E., Lerakis, S., Charney, A.W., Wang, F., Levin, M., Glicksberg, B., Narula, J., Hofer, I., Singh, K., Nadkarni, G.N., 2023. Implications of the Use of Artificial Intelligence Predictive Models in Health Care Settings : A Simulation Study. *Ann Intern Med*. <https://doi.org/10.7326/M23-0949>
- Vazquez, M.A., Oliver, G., Amarasingham, R., Amarasingham Ruben, Sundaram Venkatraghavan, Chan Kevin, Ahn Chul, Zhang Song, Bickel Perry, Parikh Samir M., Wells Barbara, Miller R. Tyler, Hedayati Susan, Hastings Jeffrey, Jaiyeola Adeola, Nguyen Tuan-Minh, Moran Brett, Santini Noel, Barker Blake, Velasco Ferdinand, Myers Lynn, Meehan Thomas P., Fox Chester, Toto Robert D., 2024. Pragmatic Trial of Hospitalization Rate in Chronic Kidney Disease. *New England Journal of Medicine* 390, 1196–1206. <https://doi.org/10.1056/NEJMoa2311708>

- Walker, S.C., French, B., Moore, R.P., Domenico, H.J., Wanderer, J.P., Mixon, A.S., Creech, C.B., Byrne, D.W., Wheeler, A.P., 2023. Model-Guided Decision-Making for Thromboprophylaxis and Hospital-Acquired Thromboembolic Events Among Hospitalized Children and Adolescents: The CLOT Randomized Clinical Trial. *JAMA Netw Open* 6, e2337789. <https://doi.org/10.1001/jamanetworkopen.2023.37789>
- Walters, W.H., Wilder, E.I., 2023. Fabrication and errors in the bibliographic citations generated by ChatGPT. *Sci Rep* 13, 14045. <https://doi.org/10.1038/s41598-023-41032-5>
- Wang, S., Scells, H., Koopman, B., Zuccon, G., 2023. Can ChatGPT Write a Good Boolean Query for Systematic Review Literature Search? <https://doi.org/10.48550/arXiv.2302.03495>
- Weiss, J., Raghu, V.K., Paruchuri, K., Zinzuwadia, A., Natarajan, P., Aerts, H.J.W.L., Lu, M.T., 2024. Deep Learning to Estimate Cardiovascular Risk From Chest Radiographs : A Risk Prediction Study. *Ann Intern Med*. <https://doi.org/10.7326/M23-1898>
- Widner, K., Virmani, S., Krause, J., Nayar, J., Tiwari, R., Pedersen, E.R., Jeji, D., Hammel, N., Matias, Y., Corrado, G.S., Liu, Y., Peng, L., Webster, D.R., 2023. Lessons learned from translating AI from development to deployment in healthcare. *Nat Med* 29, 1304–1306. <https://doi.org/10.1038/s41591-023-02293-9>
- Wu, K., Wu, E., Cassasola, A., Zhang, A., Wei, K., Nguyen, T., Riantawan, S., Riantawan, P.S., Ho, D.E., Zou, J., 2024. How well do LLMs cite relevant medical references? An evaluation framework and analyses. <https://doi.org/10.48550/arXiv.2402.02008>
- Xu, S., Yang, L., Kelly, C., Sieniek, M., Kohlberger, T., Ma, M., Weng, W.-H., Kiraly, A., Kazemzadeh, S., Melamed, Z., Park, J., Strachan, P., Liu, Y., Lau, C., Singh, P., Chen, C., Etemadi, M., Kalidindi, S.R., Matias, Y., Chou, K., Corrado, G.S., Shetty, S., Tse, D., Prabhakara, S., Golden, D., Pilgrim, R., Eswaran, K., Sellergren, A., 2023. ELIXR: Towards a general purpose X-ray artificial intelligence system through alignment of large language models and radiology vision encoders [WWW Document]. *arXiv.org*. URL <https://arxiv.org/abs/2308.01317v2> (accessed 9.26.23).
- Yu, F., Moehring, A., Banerjee, O., Salz, T., Agarwal, N., Rajpurkar, P., 2024. Heterogeneity and predictors of the effects of AI assistance on radiologists. *Nat Med* 30, 837–849. <https://doi.org/10.1038/s41591-024-02850-w>
- Zakka, C., Shad, R., Chaurasia, A., Dalal, A.R., Kim, J.L., Moor, M., Fong, R., Phillips, C., Alexander, K., Ashley, E., Boyd, J., Boyd, K., Hirsch, K., Langlotz, C., Lee, R., Melia, J., Nelson, J., Sallam, K., Tullis, S., Vogelsong, M.A., Cunningham, J.P., Hiesinger, W., 2024. Almanac - Retrieval-Augmented Language Models for Clinical Medicine. *NEJM AI* 1. <https://doi.org/10.1056/aioa2300068>
- Zanon, C., Toniolo, A., Bini, C., Quaia, E., 2023. ChatGPT Goes to The Radiology Department: A Pictorial Review. <https://doi.org/10.20944/preprints202312.0714.v1>
- Zhou, Q., Chen, Z.-H., Cao, Y.-H., Peng, S., 2021. Clinical impact and quality of randomized controlled trials involving interventions evaluating artificial intelligence prediction tools: a systematic review. *NPJ Digit Med* 4, 154. <https://doi.org/10.1038/s41746-021-00524-2>



AI in Medicine and Medical Education: Critical Issues and Potential Solutions

William Hersh, MD
Professor
Department of Medical Informatics & Clinical Epidemiology
Oregon Health & Science University
Portland, OR, USA

1

Objectives and disclosures

- After this talk, you will to be able to
 - Define the major types of AI and their applications, successes, and limitations in biomedicine
 - Discuss the evidence base for AI, its limitations, and how to improve it
 - Describe the issues and challenges for AI in medical education
- Disclosures
 - Funding from Voice AI Bridge2AI 1OT2OD032720 and other NIH grants

AI in Medicine and Medical Education

2



2

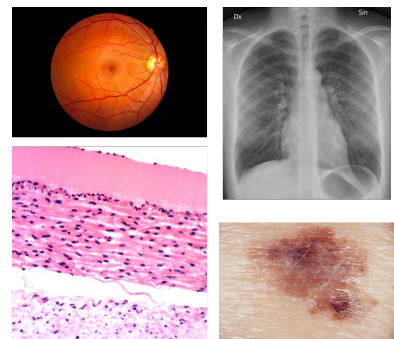
Artificial intelligence (AI)

- AI – “information systems and algorithms capable of performing tasks associated with human intelligence” (Rajpurkar, 2022)
- Some classify AI into two broad categories (Khare, 2023)
 - Predictive AI – use of data and algorithms to predict some output (e.g., diagnosis, treatment recommendation, prognosis, etc.)
 - Generative AI – generates new output based on prompts (e.g., text, images, etc.)
- A large part of modern success of AI due to machine learning (ML) – “computer programs that learn without being explicitly programmed” (McCarthy, 1990, attributed to Samuel, 1959; Shah, 2023)
 - Most success with deep learning, based on many-layered neural networks



Predictive AI in medicine

- “Predictive AI” driven by advances in ML, increasing availability of data, and more powerful computers and networks (Topol, 2019; Rajpurkar, 2022)
 - Deep learning in imaging breakthroughs by Hinton (2006)
- Most success in image interpretation (Rajpurkar, 2023); examples include
 - Radiology – chest x-rays for diagnosis of pneumonia and tuberculosis
 - Ophthalmology – retinal images for diagnosis of diabetic retinopathy
 - Dermatology – skin lesions for diagnosis of cancer
 - Pathology – breast cancer slides to predict metastasis



Predictive AI not limited to imaging

- Adverse events in hospitalizations from electronic health record (EHR) data (Rajkomar, 2018)
- Protein folding from amino acid sequences (Jumper, 2021)
- Model based on past ICD-10 codes and lab results to predict future diagnoses in office visits (Mukherjee, 2023)
- Semantic reconstruction of continuous language from fMRI brain recordings (Tang, 2023)
- Map chemicals to odors perceived by humans (Lee, 2023)
- Predict Alzheimer's Disease from EHR data up to 7 years before diagnosis (Tang, 2024)
- Voice as a biomarker in Parkinson's Disease, Alzheimer's Disease, cognitive impairment, COVID-19, and others (Idrisoglu, 2023; Bensoussan, 2024)
- The list goes on and on, especially with addition of generative AI...



5

Also success in “seeing” where humans cannot (Topol, 2022)

- Retinal images
 - Age, biological sex, and cardiovascular risk determination from retinal images (Poplin, 2018)
 - Race (Coyner, 2023)
- Electrocardiograms (ECGs)
 - Age and biological sex determination (Attia, 2019)
 - Chronic kidney disease (Holmstrom, 2023)
- Chest x-rays
 - Race (Gichoya, 2022)
 - Cardiac function and valvular heart diseases (Ueda, 2023)
 - Diabetes (Pyrros, 2023)
 - Correlation with chronological age in healthy cohorts and, for various chronic diseases, difference between estimated age and chronological age (Mitsuyama, 2023)
 - Cardiac risk as accurately as common models, e.g., atherosclerotic cardiovascular disease (ASCVD) (Weiss, 2024)



Using AI techniques, a computer can determine from a 12-lead ECG:



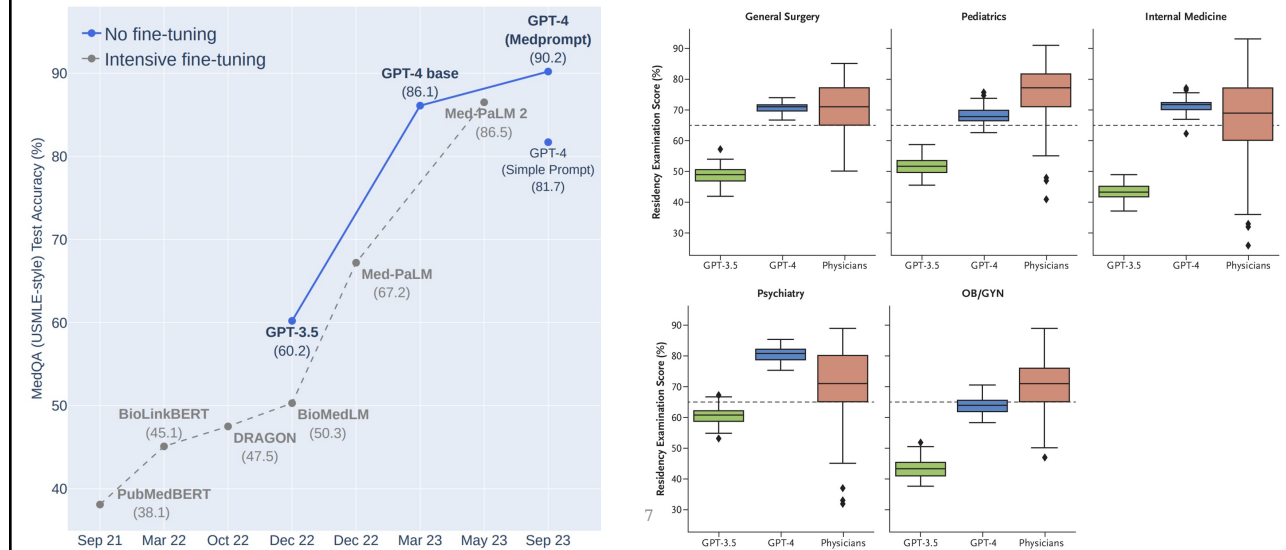
Whether you are male or female with an accuracy of over 90%

Your age, if you're healthy, within 7 years ... And may determine your physiologic age if you have other comorbidities



6

Success of generative AI – board exams (Kung, 2023; Nori, 2023; Katz, 2024; and more)



7

Success of LLMs (cont.)

- Solving clinical cases – comparable to but not better than expert humans (Levine, 2023; Kanjee, 2023; Rao, 2023; Benoit, 2023; Chen, 2023; Levkovich, 2023)
- In simulated (text-based) objective structured clinical exam (OSCE) format, Google’s Articulate Medical Intelligence Explorer (AMIE) outperformed primary care physicians in text-based dialogue in history-taking, diagnostic accuracy, management reasoning, communication skills, and empathy (Tu, 2024)
- For 20 clinical cases, GPT-4 performed comparable to attending physicians and residents in diagnostic accuracy, correct clinical reasoning, and cannot-miss diagnosis inclusion (Cabral, 2024)

8

Results of LLMs (cont.)

- Communicating with patients
 - Answering questions in public forums (Sarraj, 2023; Ayers, 2023)
 - Writing letters with comparable or better empathy (Ali, 2023, Ayers, 2023)
 - Generating surgical consent forms better than surgeons (Decker, 2023)
- Closing the loop with predictive AI
 - Classifying CXR findings based on previous images and reports (Xu, 2023)
 - Generating CXR reports from new images in ED from prior images and reports (Huang, 2023)
 - Predicting cardiovascular risk comparable to Framingham models (Han, 2023)
 - Designing and validating easily synthesizable and structurally novel antibiotics (Swanson, 2024)



But there are some downsides to generative AI

- Dictionary.com 2023 word of year: hallucinate
 - <https://content.dictionary.com/word-of-the-year-2023/>
- Fabrication and errors in the bibliographic citations – asked to produce short literature reviews on 42 multidisciplinary topics (Walters, 2023)
 - 55% of GPT-3.5 citations and 18% of GPT-4 citations fabricated
 - 43% of real (non-fabricated) GPT-3.5 citations and 24% of real GPT-4 citations include substantive errors
- 8 clinical questions asked of 4 LLMs recapitulated “harmful, race-based medicine” (Omiye, 2023)



Downsides to generative AI (cont.)

- Equally compelling disinformation – humans cannot distinguish between true and false tweets generated by GPT-3 and written by real Twitter users (Spitale, 2023)
- Automated GPT detectors have mixed results (Sadasivan, 2023; Odri, 2023; Desaire, 2023; Tang, 2024)
 - More likely to classify non-native English writing as AI-generated (Liang, 2023)
 - Humans not able to discern AI writing either (Dell'Acqua, 2023)



And some downsides to AI in general

- After clinical models deployed, performance may decline due to actual real-world use (Vaid, 2023; Palmer, 2023)
- Implementing diabetic retinopathy screening in rural Thailand and India found (Widner, 2023)
 - Challenges related to equipment operation, workflows, and image quality
 - Need for training and attention to human factors
- ML algorithms, especially generative AI, have large carbon footprints, although details sometimes not known due to lack of company transparency (Kirkpatrick, 2023)
 - One estimate is that electricity consumption of AI request is 10-fold more than Google search (de Vries, 2023)



Downsides to AI in general (cont.)

- Variable impacts on different levels of radiologists, leading to automation bias and detrimental effects of incorrect AI (Dratsch, 2023; Yu, 2024)
- Concerns about reproducibility (Ball, 2023)
 - Data bias (especially from EHR – Lewis, 2023; Chin, 2023)
 - Data leakage (Kapoor, 2023)
 - Data drift/shift (Finlayson, 2021; Li, 2024)



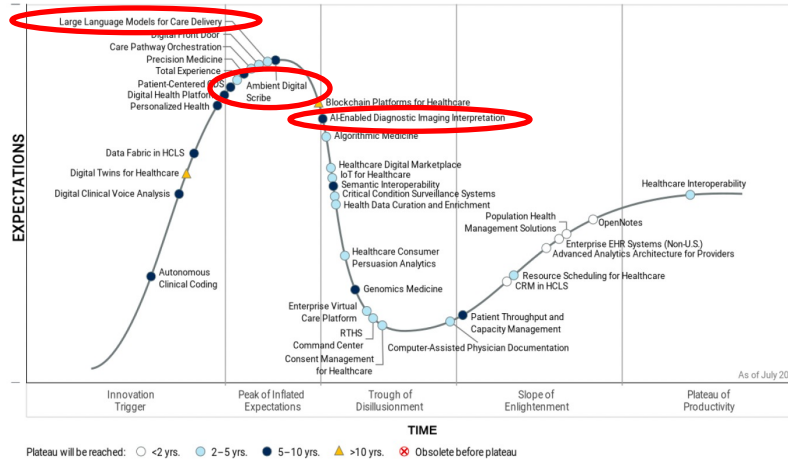
Will AI help or hinder healthcare?

- Real-world use still modest
 - As of Sept 2023, only 21% of medical groups using AI applications in practice (MGMA, 2023)
 - EHR usability, patient communications, and billing outrank AI as top tech priorities among medical groups (MGMA, 2023)
 - AI tools used by only 38% of physicians (AMA, 2023)
- “AI won’t replace radiologists, but radiologists who use AI will replace radiologists who don’t,” (Langlotz, 2019)
 - (Plug in your health profession)



AI is at peak of inflated expectations (Meyer, 2023)

Hype Cycle for Healthcare Providers, 2023



AI in Medicine and

Gartner



15

What do we need for AI applications to get to plateau of productivity?

- Translational AI (Hersh, 2024)
 - Show us the evidence
 - How do we learn about it
- Education of clinical workforce and others (Hersh, 2023)
- Search still matters (Hersh, 2024)
 - In many circumstances, who said what is more important than providing a generated answer

Translational AI: A Necessity and Opportunity for Biomedical Informatics and Data Science

Posted on February 7, 2024 by Guest Author

Journal of the American Medical Informatics Association, 2024, 1-3
<https://doi.org/10.1093/jamia/ocad014>

Perspective

Search still matters: information retrieval in the era of generative AI

William Hersh @.MD*

Department of Medical Informatics & Clinical Epidemiology, School of Medicine, Oregon Health & Science University, Portland, OR 97239, United States

*Corresponding author: William Hersh, MD, Department of Medical Informatics & Clinical Epidemiology, School of Medicine, Oregon Health & Science University, BIC, 3181 SW Sam Jackson Park Rd, Portland, OR 97239, United States (herish@ohsu.edu)

Abstract

Objective: Information retrieval (IR), also known as search systems are ubiquitous in modern times. How does the emergence of generative artificial intelligence (AI), based on large language models (LLMs), fit into the IR process?

Process: This perspective explores the use of generative AI in the context of the motivations, considerations, and outcomes of the IR process with a focus on the epidemic use of such systems.

Conclusions: There are many information needs, from simple to complex, that motivate use of IR. Users of such systems, particularly academics, have concerns for authenticity, timeliness, and contextualization of search. While LLMs may provide functionality that aids the IR process, the continued need for search systems, and research into their improvement, remains essential.

Key words: information storage and retrieval; generative artificial intelligence; large language models; ChatGPT.

AI in Medicine and Medical Education

16

16

How do we “show the evidence?”

- From evidence-based medicine (EBM), best evidence for any clinical intervention is from randomized controlled trials (RCTs) or systematic reviews of RCTs
- Although not as easy to carry out as RCTs of drugs or devices (and placebos), AI must demonstrate benefit for patient outcomes and/or healthcare delivery improvement
 - Additional issues for RCTs of AI (Liu, 2020)
- As with drugs and devices, we need to move from “basic science” to “clinical science”
- Not everything can be studied in an RCT and RCTs cannot be done for every last clinical question (Greenhalgh, 2022)



What is the evidence so far?

- Many, many papers published about models and simulated use (basic science), including systematic reviews of those papers
- Very few RCTs demonstrating value from real-world use (clinical science) – systematic reviews of RCTs show (Zhou, 2021; Plana, 2022; Han, 2023)
 - Much smaller numbers of RCTs – about 100, depending on how we count
 - 65-82% of RCT showed positive outcomes
 - Many RCTs showed aspects of “risk of bias”



Perspective from some specific examples

- Computer-aided detection (CAdE) of polyps in colonoscopy
 - One of earliest and most widely-studied applications of AI
 - Recent systematic review shows polyps missed by colonoscopists are discovered, but mostly small and clinically inconsequential (Hassan, 2023)
 - RCT of CAdE found no increased detection of advanced neoplasias (Mangas-Sanjuan, 2023)
- 30-day hospital readmissions
 - After implementation of CMS penalty, proliferation of highly accurate predictive models published in mid-2010s
 - Recent RCT showed use of high-quality model and implementation of program around it did not reduce readmissions (Donzé, 2023)



Perspective from examples (cont.)

- RCT to assess whether use of previously validated hospital-acquired venous thromboembolism (HA-VTE) prognostic model, together with pediatric hematologist review, could reduce pediatric inpatient rates of HA-VTE (Walker, 2023)
 - No difference for intervention group randomized to use model
 - Reluctance to use model by primary physicians – used only 26% of time
 - For children in intervention arm, model mostly not used, AI’s “Cassandra problem” (Wilson, 2023)?
- Pragmatic trial of predictive algorithm and practice facilitators in outpatient practices did not reduce hospitalization rate in chronic kidney disease over 1 year compared with usual care (Vazquez, 2024)



How do we get to “translational AI?”

- In pediatric critical care ML research, “the literature demonstrates incomplete reporting, absence of external validation, and infrequent clinical implementation” (Heneghan, 2023)
- Singh, X/Twitter, Feb 8 2024: “Researched models aren’t implemented. Implemented models aren’t researched.”
- Postmarket surveillance, e.g., algorithmovigilance (Embi, 2021)
- Responsible use (Dorr, 2023) and code of conduct (Adams, NAM, 2024) for AI
- Building the evidence base (Hersh, 2024)



Also critical is education of clinicians and informaticians

- AI should build on competencies in clinical informatics (Hersh, 2014; Hersh 2020; Hersh, 2023)
- Others note
 - Clinicians must be prepared to practice in a world of AI (James, 2022)
 - Medical schools face dual challenges of needing to teach about AI in practice but also adapt to its use by learners and faculty (Cooper, 2023)
 - Impact in many fields beyond medicine, including
 - Computer science (Denny, 2024)
 - Data science (Hong, 2024)
 - Law (Choi, 2023)
 - How to deal with “homework apocalypse” (Mollick, 2023)

1. Find, search, and apply knowledge-based information to patient care and other clinical tasks
2. Effectively read from, and write to, the electronic health record (EHR) for patient care and other clinical activities
3. Use and guide implementation of clinical decision support (CDS)
4. Provide care using population health management approaches
5. Protect patient privacy and security
6. Use information technology to improve patient safety
7. Engage in quality measurement selection and improvement
8. Use health information exchange (HIE) to identify and access patient information across clinical settings
9. Engage patients to improve their health and care delivery through personal health records and patient portals
10. Maintain professionalism in use of information technology tools, including social media
11. Provide clinical care via telemedicine and refer patients as indicated
12. Apply personalized/precision medicine
13. Participate in practice-based clinical and translational research
14. Use and critique artificial intelligence (AI) applications in clinical care

Need competencies for use of AI-based tools by healthcare professionals (Russell, 2023)

Domain	Competency
Basic knowledge of AI	Explain what AI is and describe its healthcare applications
Social and ethical implications of AI	Explain how social, economic, and political systems influence AI-based tools and how these relationships impact justice, equity, and ethics
AI-enhanced clinical encounters	Carry out AI-enhanced clinical encounters that integrate diverse sources of information in creating patient-centered care plans
Evidence-based evaluation of AI-based tools	Evaluate the quality, accuracy, safety, contextual appropriateness, and biases of AI-based tools and their underlying datasets in providing care to patients and populations
Workflow analysis for AI-based tools	Analyze and adapt to changes in teams, roles, responsibilities, and workflows resulting from implementation of AI-based tools
Practice-based learning and improvement regarding AI-based tools	Participate in continuing professional development and practice-based improvement activities related to use of AI tools in healthcare



Educators need to assign and innovate with AI (Mollick, 2024)

Assigning (Mollick, 2023)

- Can use as
 - Mentor
 - Tutor
 - Coach
 - Teammate
 - Student
 - Simulator
 - Tool
- Risks include
 - Confabulation
 - Bias – from training content
 - Privacy – policies not always clear
 - Instructional – student over-reliance

Innovating (Mollick, 2024)

- One Useful Thing
 - <https://www.oneusefulthing.org/>

CATEGORY	PROMPT	PEDAGOGICAL PRINCIPLES
SIMULATION	Role-playing with AI feedback	Practicing and applying knowledge
SIMULATION	Goal-playing with AI feedback	Practicing applying frameworks in new situations
CRITIQUE	Critique a scenario	Structuring knowledge. Critical thinking and protégé effect
TEACH	Teach the AI	Teaching others is a powerful learning technique
CO-CREATE	Co-create a case	Break the illusion of explanatory depth. Structuring knowledge. Retrieval
MENTOR AND COACH	Reflection coach	Reflection is critical to learning
MENTOR AND COACH	Integration agent	Creating connections and interleaving concepts
TUTOR	Tutor	Tutoring is an effective technique for improving learning



Need policy for generative AI: mine for introductory course <https://dmice.ohsu.edu/hersh/introcourse-generativeAI-policy.html>

OHSU Introduction to Biomedical & Health Informatics Course Policy for Use of ChatGPT and Generative AI

[William Hersh, MD](#)

Professor
Department of Medical Informatics & Clinical Epidemiology
School of Medicine
Oregon Health & Science University

This page reflects course policy for the Oregon Health & Science University (OHSU) course that I teach called **Introduction to Biomedical & Health Informatics**. I teach versions of this course in several OHSU programs, including:

- Biomedical Informatics Graduate program - [BML 510/610 - Introduction to Biomedical & Health Informatics](#)
- AMIA 10x10 ("ten by ten") course - [OHSU-AMIA 10x10 course](#)
- MD curriculum course, [MINF 705B/709A](#)

ChatGPT and generative AI systems based on large language models (LLMs) can be a useful tool for learning all kinds of topics, including in biomedical and health informatics. These tools should not, however, be used to substitute one's own knowledge. Students can "converse" with ChatGPT or generative AI systems to get ideas for answers to questions, but the final responses to discussion forums, quiz and test questions, and the term paper, should reflect their own thinking, judgment, and language.

This policy is derived from the [overall OHSU policy for academic integrity](#), including the use of AI. The [OHSU Biomedical Informatics Graduate Program](#) is developing a general policy for use of generative AI in courses, but in the meantime, I am adopting the following guidelines for course activities:

- **Discussion forums** - the purpose of the discussion forums is for students to discuss issues that elaborate on unit course materials. Individual forum postings are not graded, although a component of the course grade is based on participation in the forums, comparable to what used to be participation in live classrooms. While students can "converse" with generative AI to get ideas for responses to forum questions, what is actually posted in the forum by students should represent their own ideas and thought processes.
- **Homework/self-assessment** - students can ask generative AI about topics mentioned in the multiple-choice questions but are expected to answer the questions based on their own knowledge of materials covered in the lectures.
- **Term paper/project** - students can ask generative AI for help in brainstorming about their term paper. Generative AI systems do not write long papers, and their output tends to focus on generalities and may be prone to confabulation, especially in generating references. The 10-15 page term paper should have a focus on a specific topic, and delve into it with coherent discussion and ample references, including recent ones, as outlined in the course syllabus.
- **Final exam** - students must not access generative AI during the final exam.

If you are a student and have a question on whether use of generative AI is appropriate, please [reach out directly to me](#) (email is best for initial contact).

As a guiding principle, we expect and require that all work submitted be the student's own, original work. When considering using such a generative AI tool, students should ask themselves: Will the tool's output be something I will be turning in directly? In general, students may use such tools as a source of information, but not to produce output that they intend to turn in or as a replacement for a traditional cited reference.

Most ethical and conduct policies in our informatics educational programs, and in the work we subsequently do as professionals, are enforced through an **honor code**. We recognize we cannot police all inappropriate use of AI or other activities. We hope that students will find ways to use LLMs to enhance their learning but not substitute for or become dependent on it.

AI in Medi
Last update: January 8, 2024



25

Search still matters (Hersh, 2024)

- Generative AI systems such as ChatGPT are cool and fun but
 - For some tasks that many of us do, need more than answers, e.g.,
 - Clinical – patient-care questions
 - Research – methods and insights
 - Teaching – synthesizing knowledge for our students
 - Where the information comes from is as important what it says
- Information retrieval (IR) systems “do not inform user about a subject; indicate the existence (or nonexistence) and whereabouts of documents related to an information request” (Lancaster, 1979)

AI in Medicine and Medical Education

26



26

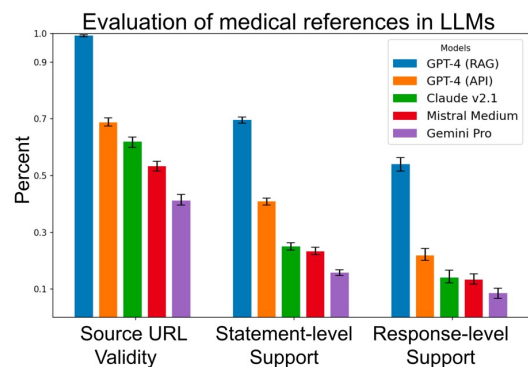
Other concerns for search

- Concerns for search and LLMs (Shah, 2023)
 - Opacity and hallucinations
 - LLMs don't know when they don't know
 - Stealing content and Web site traffic
 - LLMs learn from other people's content and may divert traffic from their Web sites
 - Taking away learning and serendipity
 - Search is exploring and we may learn new unrelated things
- LLMs “contaminating” scientific literature and peer review
 - Scientific literature – estimates range from
 - 1% generally (Gray, 2024)
 - 6% for Nature portfolio and 17.5% in computer science (Liang, 2024)
 - Peer review
 - Usage in AI conference peer reviews estimated to be 6.5-16.9% (Liang, 2024)



Search in the era of generative AI

- Another adage of EBM?
 - Gen AI for background questions
 - Search and critical appraisal for foreground questions
- Retrieval-augmented generation (RAG) for improving Gen AI but do we need “generation-augmented retrieval” for LLMs to aid search?
 - Evidence modest so far, e.g., using ChatGPT for generating Boolean queries did not improve search results (Wang, 2023)
 - Best LLM with RAG (GPT-4 in CoPilot) achieved about 70% statement-level support and <50% for others (Wu, 2024)



Conclusions

- AI will profoundly impact the practice and education of all health professions
- Translational AI is a necessity and opportunity for clinicians, researchers and others
- Healthcare, informatics, and educational professionals must be competent with AI as much as any other tool in clinical practice
- Generative AI systems must provide attribution for their assertions



Questions?

William Hersh, MD
Professor
Department of Medical Informatics & Clinical Epidemiology
Oregon Health & Science University
Portland, OR, USA
Email
hersh@ohsu.edu
Web
<http://www.billhersh.info>
Blog
<https://informaticsprofessor.blogspot.com/>
Textbook
<http://www.informaticsbook.info>
What is Informatics?
<http://informatics.health>

